

Figure S1: The age-standardized prevalence rate per 100,000 population by sex for all Global Burden of Disease regions (generated from data available from <http://ghdx.healthdata.org/gbd-results-tool>)

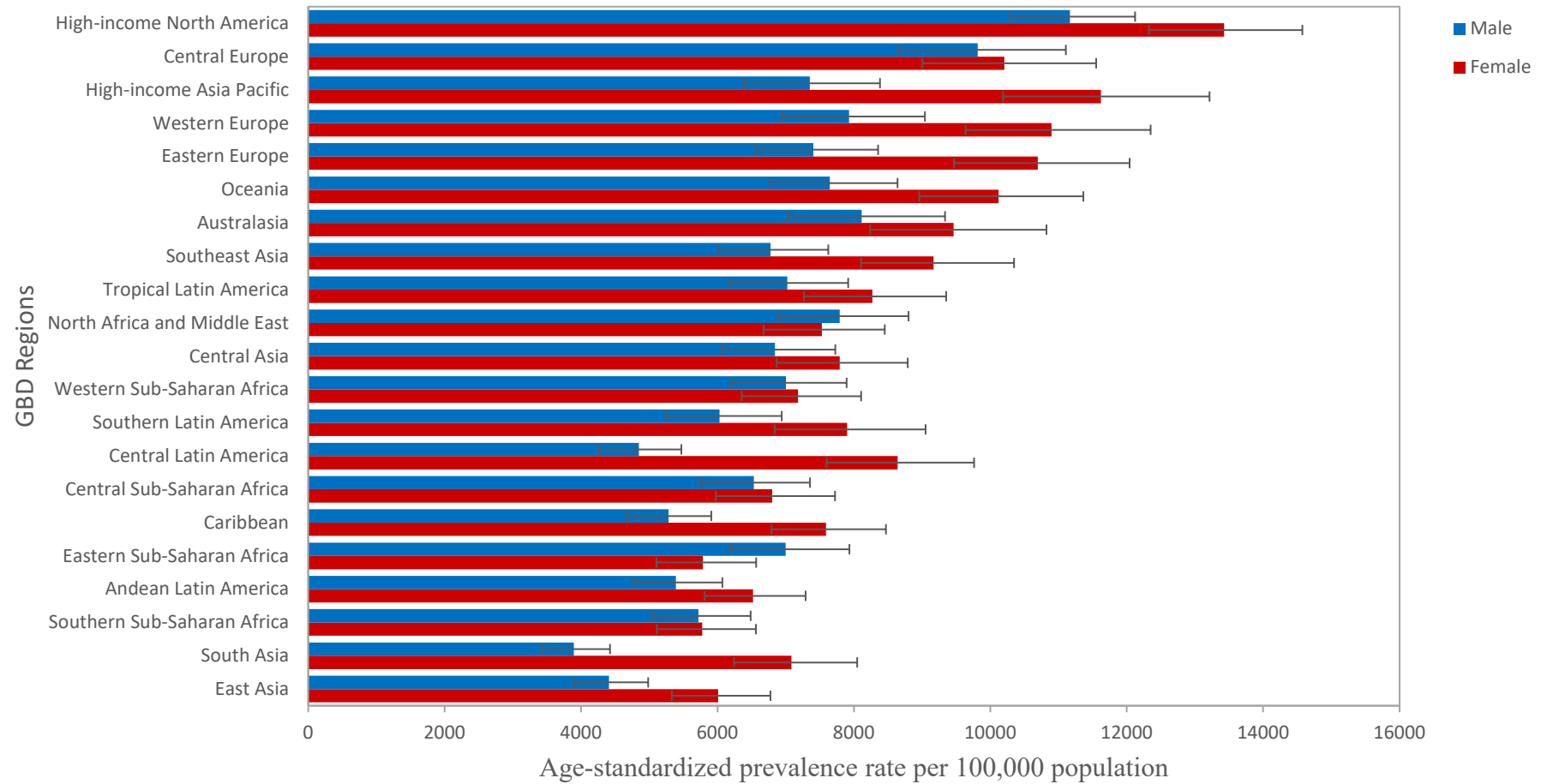


Figure S2: The age-standardized incidence rate per 100,000 population by sex for all Global Burden of Disease regions (generated from data available from <http://ghdx.healthdata.org/gbd-results-tool>)

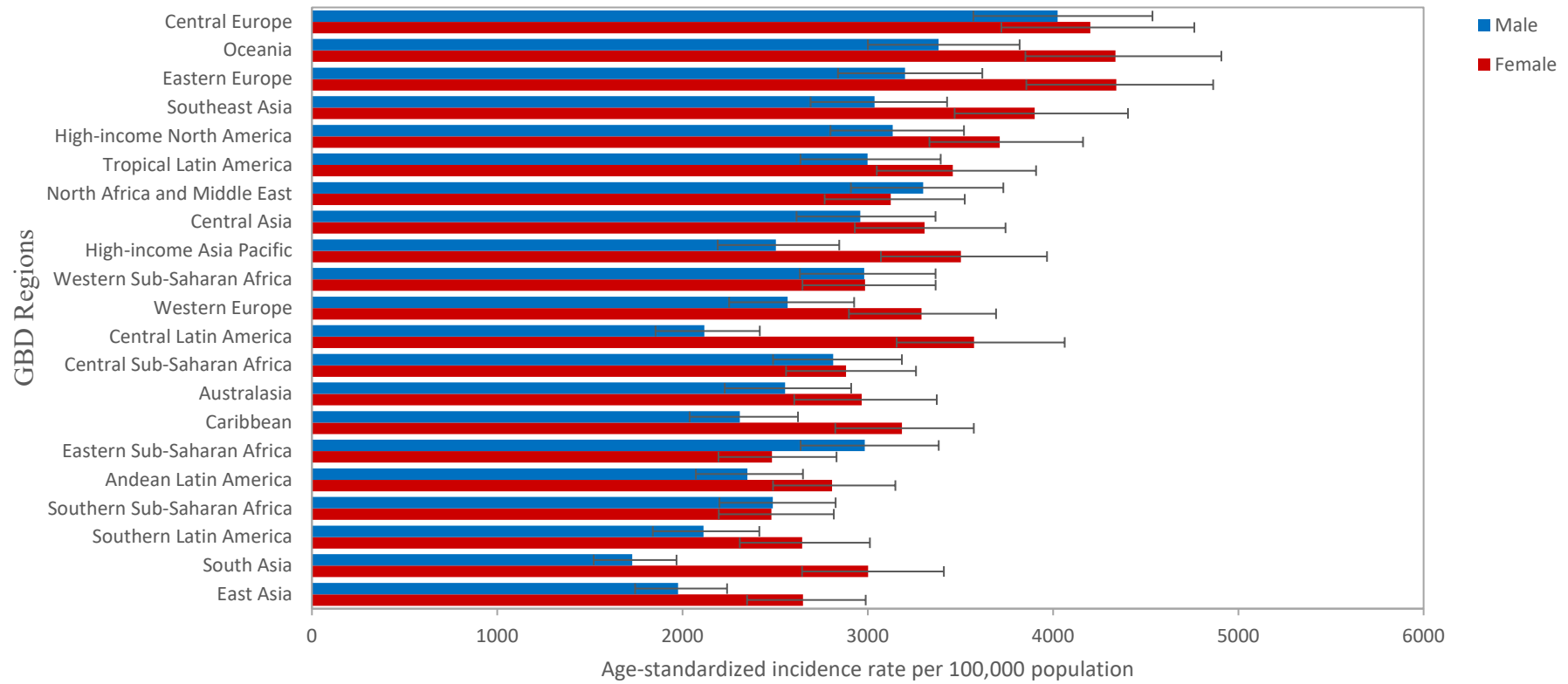


Figure S3: Percentage change in age-standardized prevalence rate per 100,000 population by sex between 1990 and 2019 for all Global Burden of Disease regions (generated from data available from <http://ghdx.healthdata.org/gbd-results-tool>)

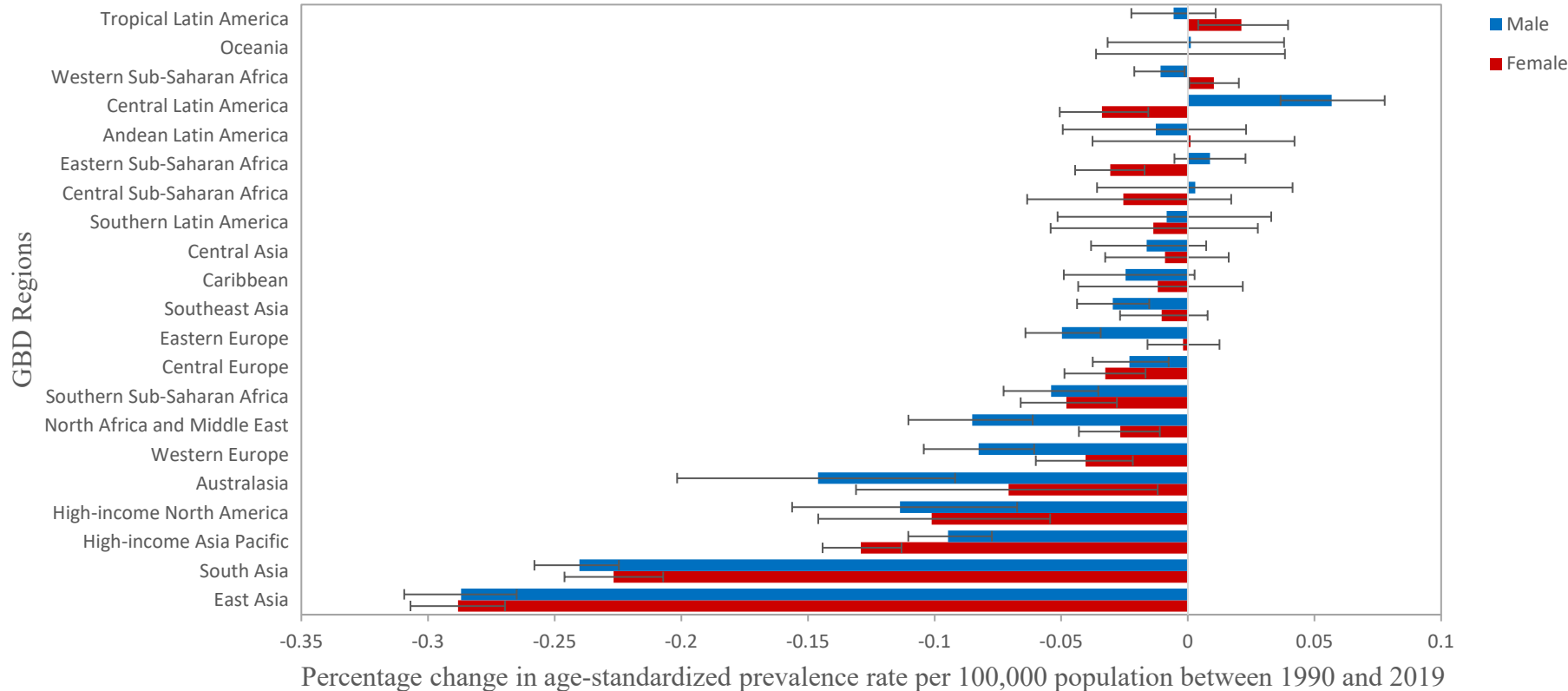


Figure S4: Percentage change in age-standardized incidence rate per 100,000 population by sex between 1990 and 2019 for all Global Burden of Disease regions (generated from data available from <http://ghdx.healthdata.org/gbd-results-tool>)

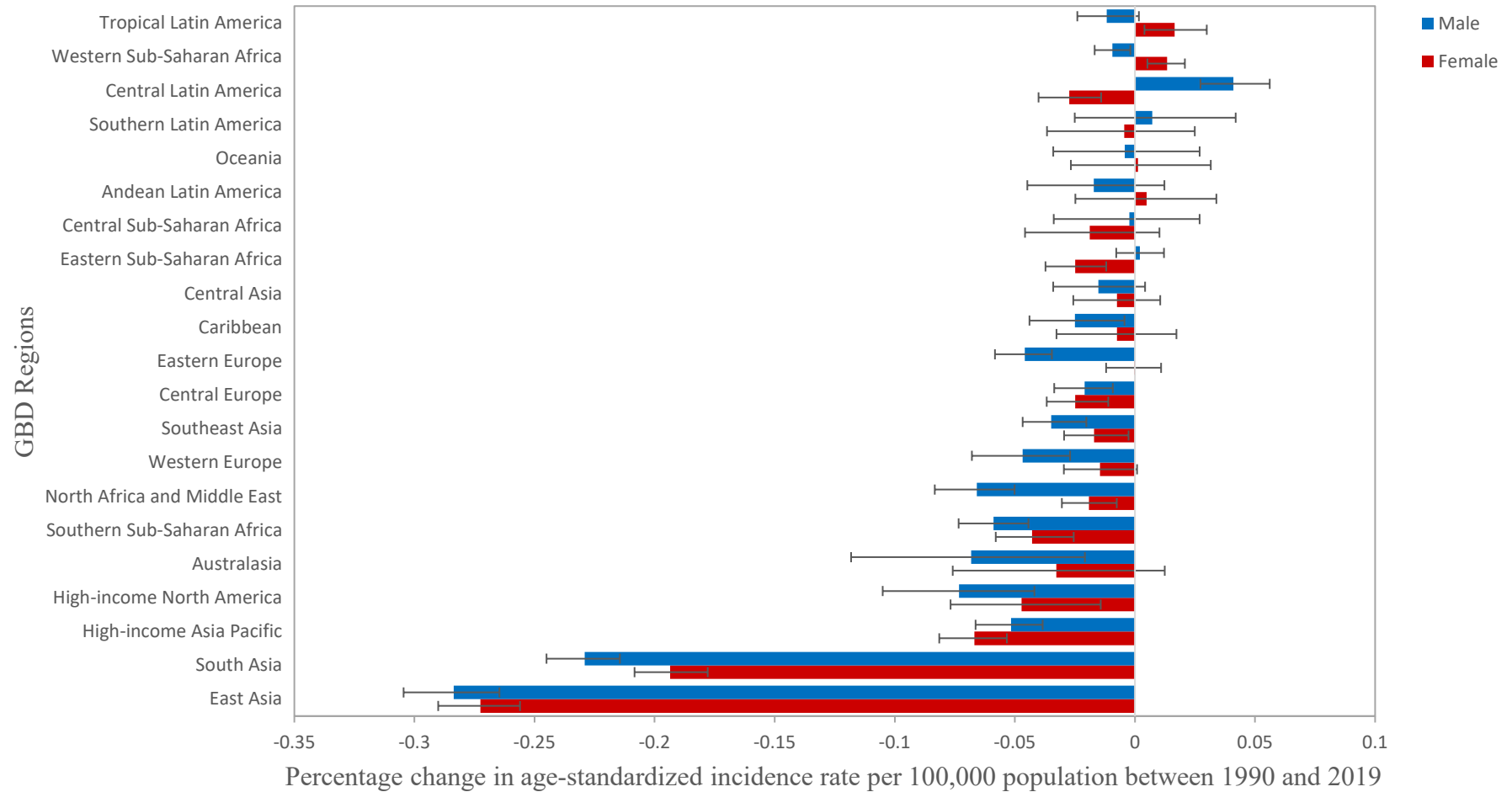


Figure S6: The number of incident cases between 1990 and 2019 for all Global Burden of Disease regions (generated from data available from <http://ghdx.healthdata.org/gbd-results-tool>)

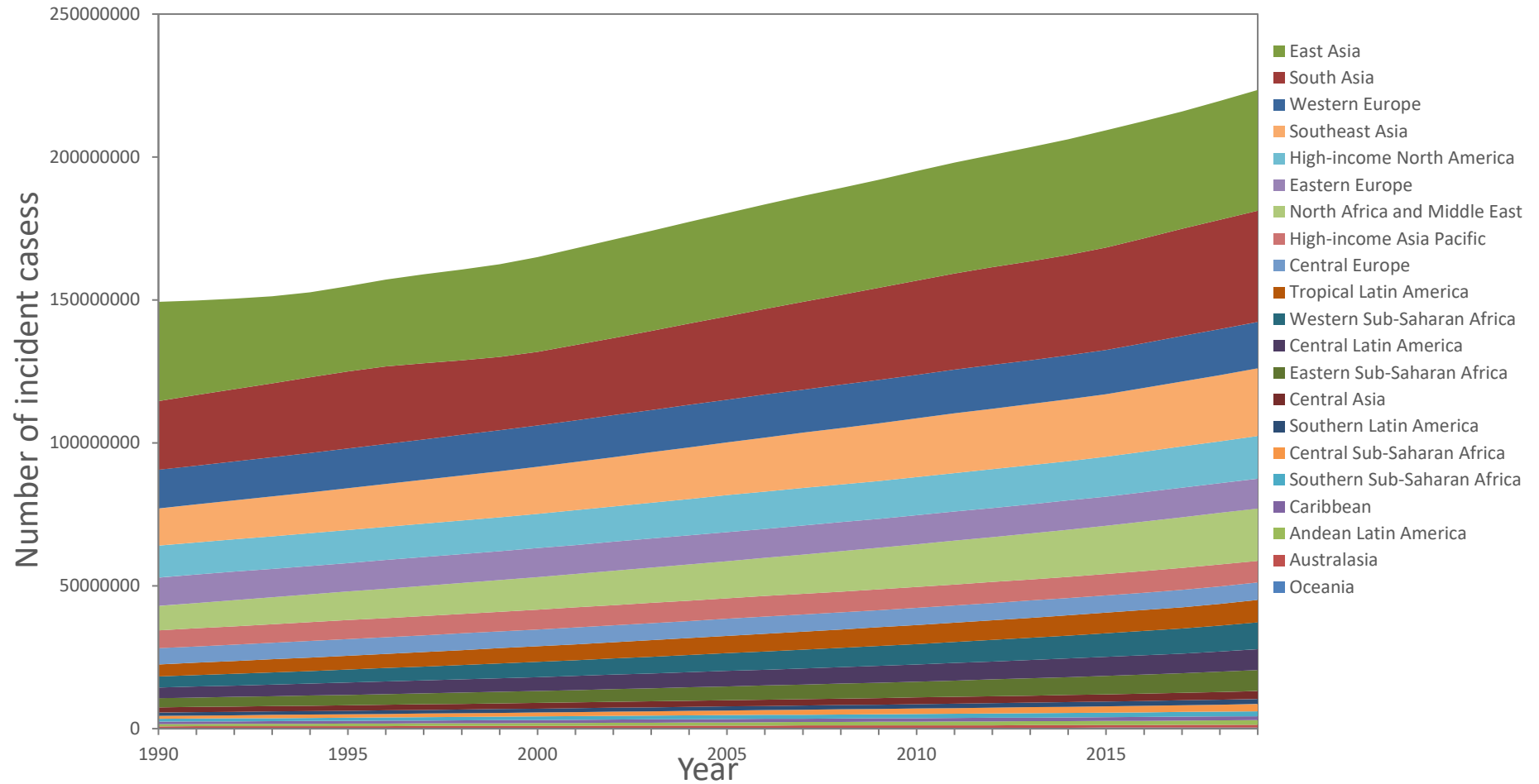


Figure S7: Age-standardized YLD rate of low back pain per 100,000 population in 2019, by country. (generated from data available from <http://ghdx.healthdata.org/gbd-results-tool>)

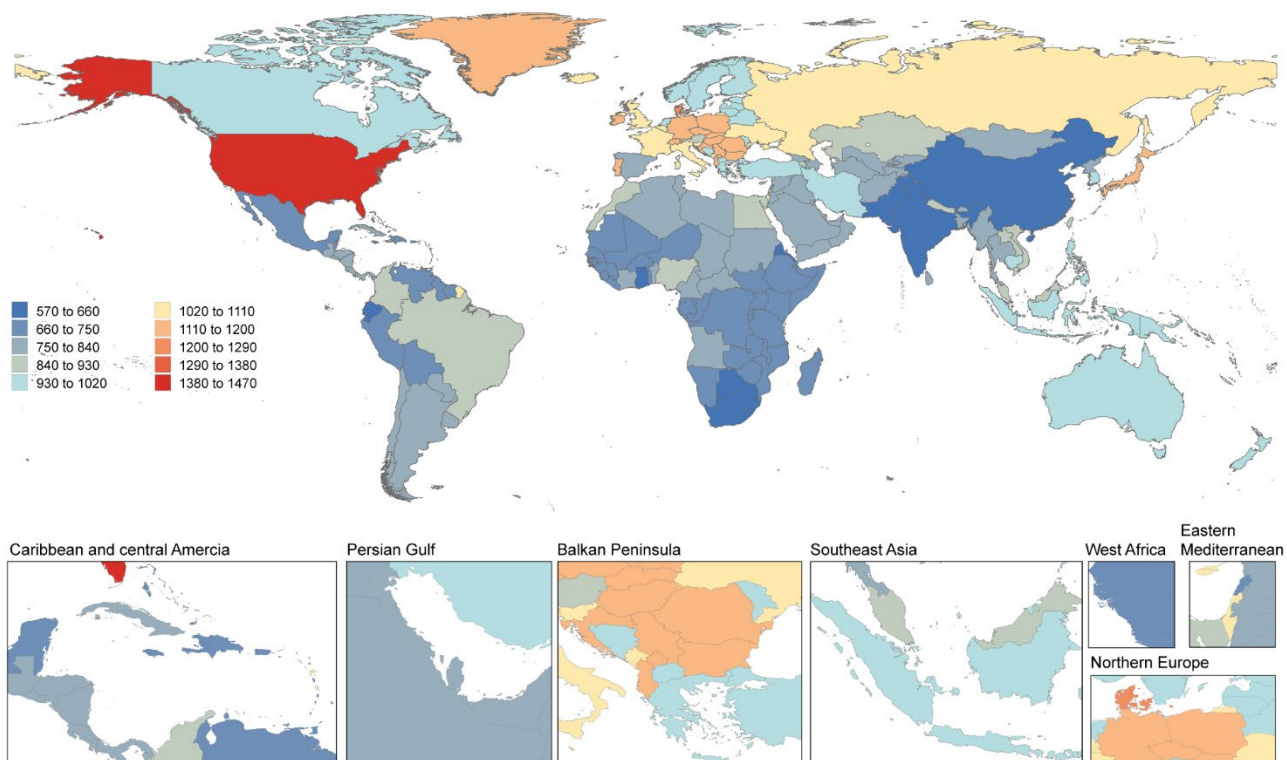


Figure S8: Global number of incident cases and incidence rate of low back pain per 100,000 population by age and sex in 2019. (generated from data available from <http://ghdx.healthdata.org/gbd-results-tool>)

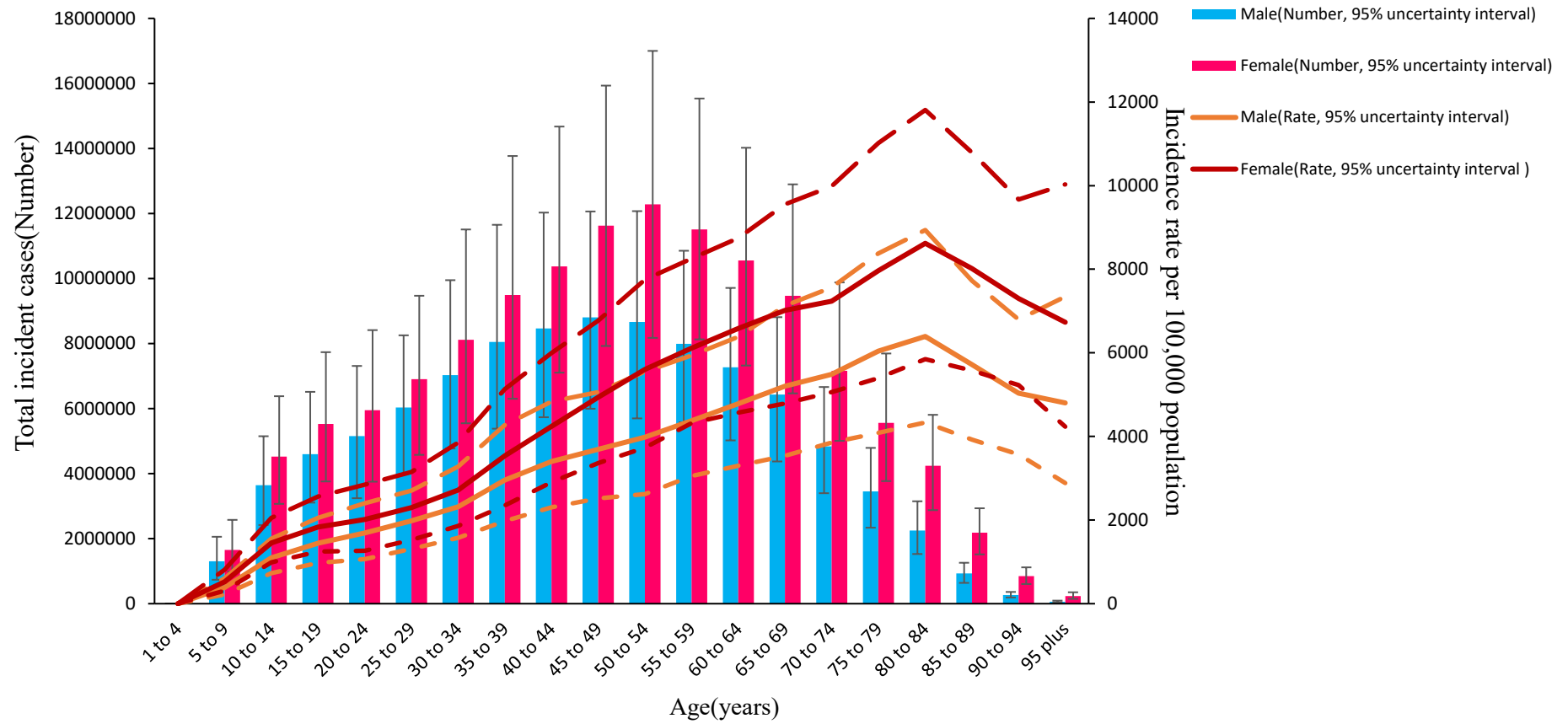


Figure S9: Global number of YLDs cases and rate of low back pain per 100,000 population by age and sex in 2019. (generated from data available from <http://ghdx.healthdata.org/gbd-results-tool>)

